

TATA Steel - Leeds

NDT Test – Defect Images

Grab Number 1 Serial: 456T, 22 Tonne

Grab Number 2 Serial: 170972, 25 Tonne

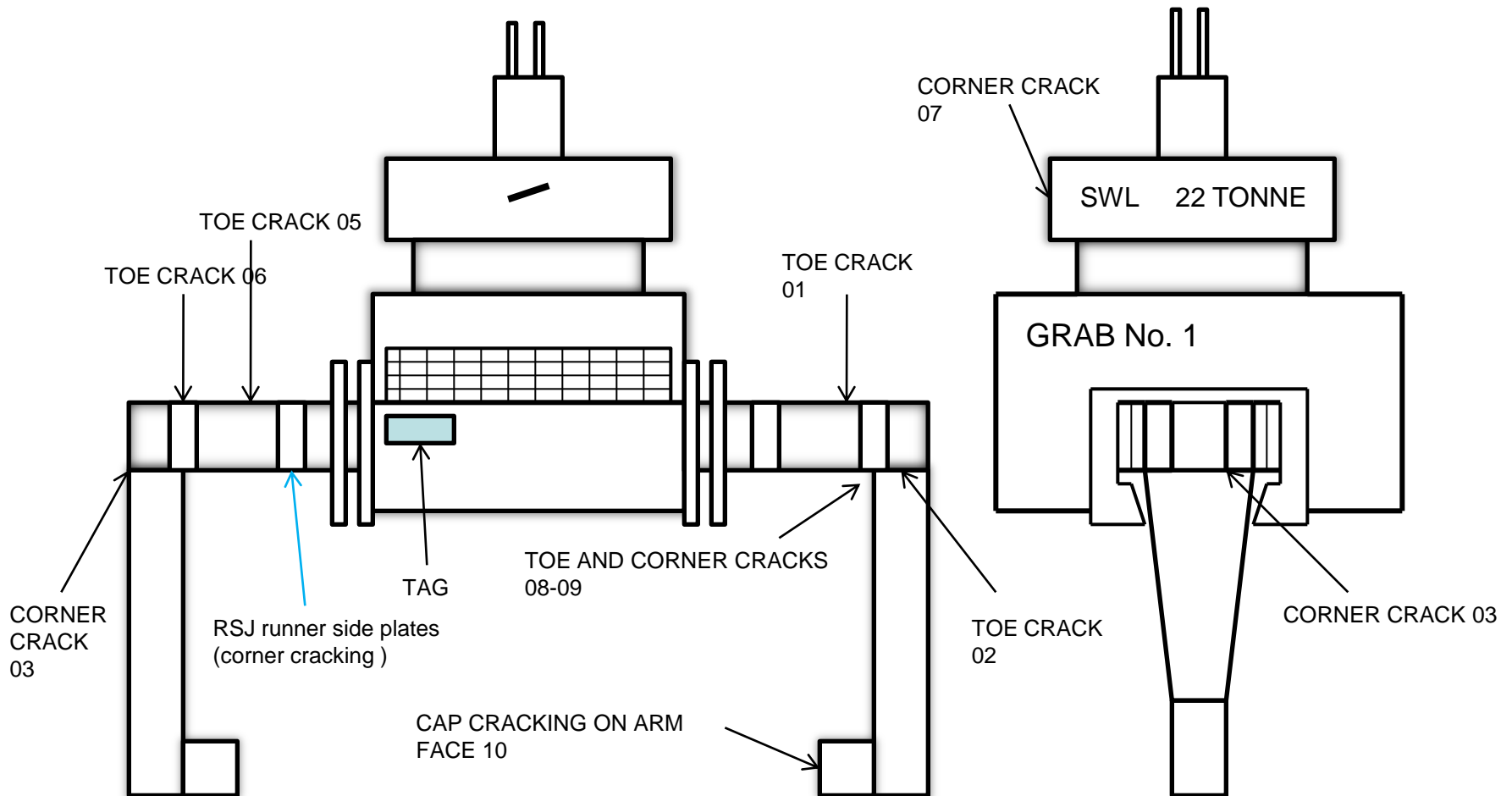
Grab Number 1 Serial: 456T, 22 Tonne
Grab Number 2 Serial: 170972, 25 Tonne

Cracking was found on 19 areas throughout the two 'Coil Grabbers'. All of the surface breaking indications have been circled in black pen and numbered. For specific locations of defects see attached diagrams.

Other smaller cracking was found on all four corner welds of the 8 RSJ runner side plates (see photo).



GRAB No. 1, 22 TONNE, SERIAL No. 456T



ACDC CRANES Ltd

LIFTING ASSISTANCE

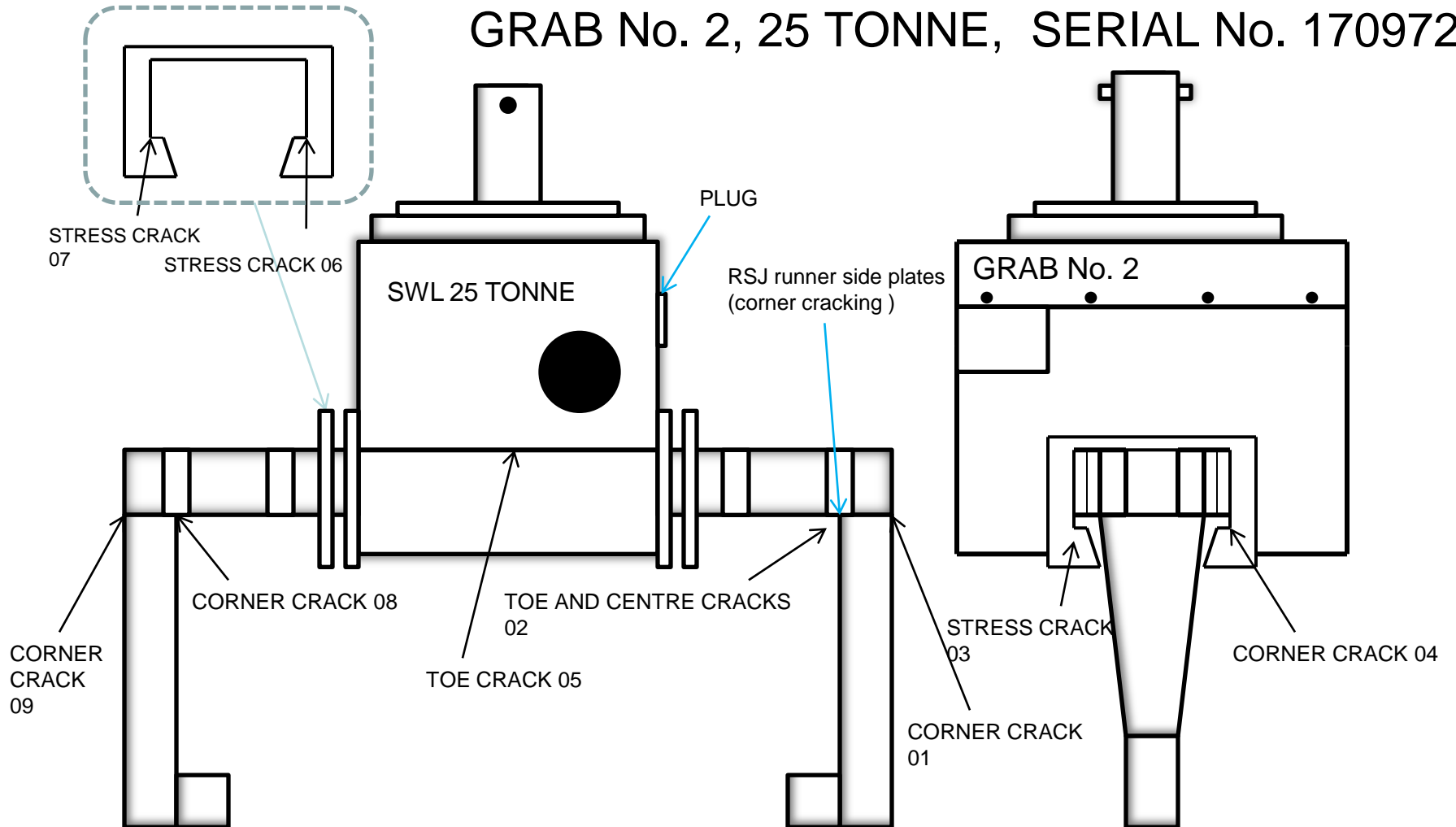
+44(0)1909 772468

Grab Number 1 Serial: 456T, 22 Tonne



Please note there is no number 6

GRAB No. 2, 25 TONNE, SERIAL No. 170972

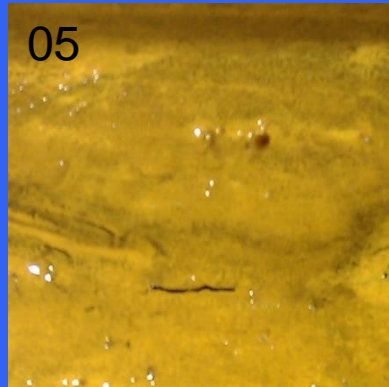
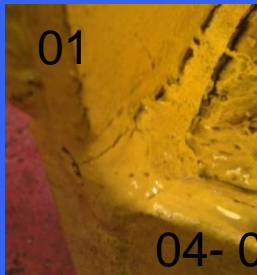


ACDC CRANES Ltd

LIFTING ASSISTANCE

+44(0)1909 772468

Grab Number 2 Serial: 170972, 25 Tonne



Note: 04 and 06 are the same size and orientation i.e. one photo.



Crack no.07 was intermittent throughout the outlined area.